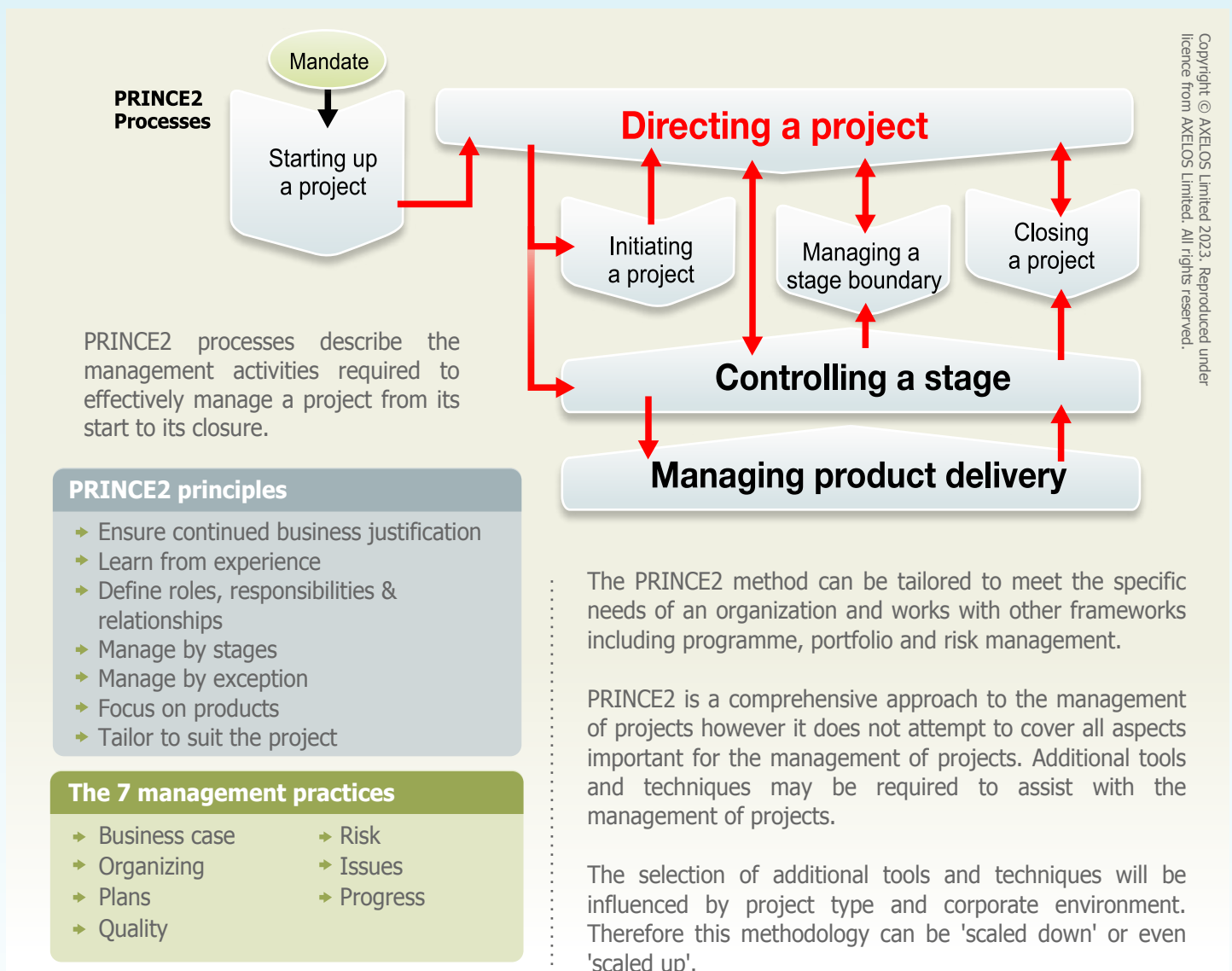


### What is PRINCE2?

PRINCE2 (Projects IN Controlled Environments Version2) is recognised by thousands of organizations across the globe as best practice project management. Over two million people have obtained PRINCE2 project management certification and it is fast becoming the project management method of choice.

What is PRINCE2? It is a project management method that can be applied to different types of projects and projects of different sizes. Comprehensive in its approach but flexible in application, the methodology offers a structured approach to control the start, progress and closure of a project.

PRINCE2 is a process based project management methodology. It is founded on 7 principles that drive the application of 7 management processes and 7 key project management practices. The process model is shown below:

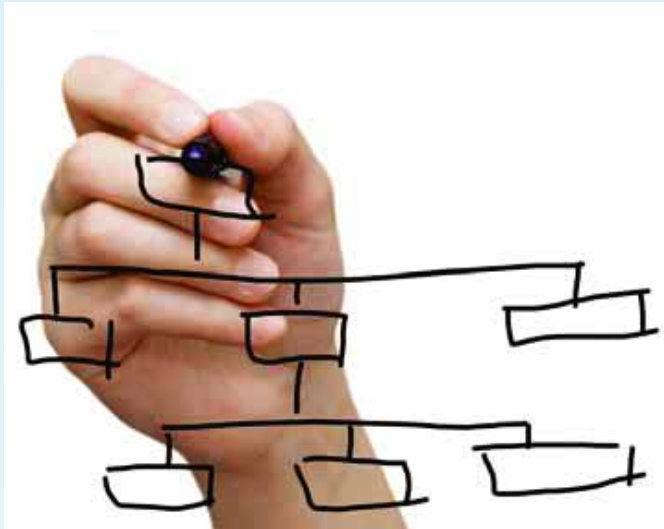


# PRINCE2® - Best Practice Project Management

## PRINCE2 Information

### How will PRINCE2 benefit me and my organization?

Let us answer this question by asking you....



- Are changes planned in your organization?
- Would a structured approach to managing these changes benefit you?
- Is the start up, execution and closure of your projects managed differently for each project?
- Are the responsibilities of people in your organization's projects often unclear and not well understood?
- Would you benefit from a tool that identifies how to involve stakeholders in a project?
- Can the terminology used by parties involved in a project confuse stakeholders?
- Would you benefit from using consistent terminology, processes and project documents across all your projects?
- Would your organization benefit from adopting a standard that is viewed as best practice and training is independently certified by an international accreditation body?

If you answered **YES** to one of these questions then you will benefit from the use of PRINCE2.

#### What are the PRINCE2 certification levels?

The two certification levels are Foundation and Practitioner. Foundation certification demonstrates an understanding of how the method operates.

The Practitioner certification demonstrates competency in applying and adapting the method to different project situations and scenarios.

#### Who uses PRINCE2?

All types of organizations are using PRINCE2. Its generic approach has made it arguably the most common approach to manage a project in both private and public sector organizations. Some examples of the types of organizations applying PRINCE2 include:

- International development bodies
- Vendors of key product brands
- Non Government Organizations
- IT industry
- Government departments and many more

### HiLogic offers a calendar of PRINCE2 public courses plus in-house training courses.

HiLogic is a PRINCE2 Accredited Training Organization. Our training and coaching services are designed to assist organizations to quickly develop the skills base and 'know-how' needed to effectively apply PRINCE2. To support the different ways people learn, our courses include a mixture of presentation, class and group exercises and question and answer sessions. To learn more about how PRINCE2 and our services can benefit you, contact us now or visit [www.hilogic.net](http://www.hilogic.net).

# HiLogic

Helping You Enable Value

© HiLogic 2023

1300 79 3334 Australia  
03 2615 0081 Malaysia  
+61 3 8676 0629, +60 3 2615 0081 International Enquiries

[enquiries@hilogic.net](mailto:enquiries@hilogic.net)

[www.hilogic.net](http://www.hilogic.net)